

Sofa Training Guide

BACK CUSHIONS



Loose Back

- Cushions are separate from the sofa back allowing for a softer, comfortable back
- More a casual style that allows you to turn and rotate back cushions which extends the longevity of the upholstery to last twice as long



Tight Back

- Back cushion is completely integrated into the sofa back
- Provides a firmer feel and structured look
- Always looks neat because back is in place
- No plumping or fluffing of the back cushions needed



Tufted Back

- Tufting is the process of drawing a cord through a deep cushion giving high puffs of padding and small low valleys where the cord is drawn
- Other names describing the shape of the tuft are **"diamond", "biscuit" or "square"**
- Buttons are attached to cords to highlight the tufting design



Semi Attach Back

- Looks like a loose back but cushions are sewn into place
- Back cushions typically have zippers underneath for fluffing and regulating the preferred amount of fiber fill needed



Camel Back

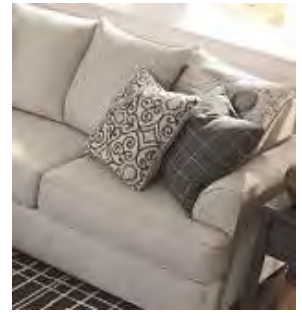
- **Displays a protruding "hump" in the center of the back**
- Elegant and traditional in style & can be found across a variety of furniture styles





Scatter Back

- Multiple pillows are arranged across the back of the sofa in the place of larger cushions
- Offer an easily adjustable comfort



Boxed Back Cushion

- Constructed with a vertical sidewall that is the same height as the thickness of the cushions
- These cushions are made by assembling the top and bottom section of the cut fabric to the sidewall fabric to form a box



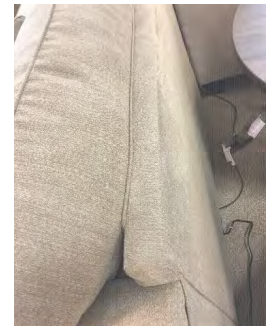
Knife Edge Cushion

- Made by sewing the top and bottom fabric panels together
- More traditional seam which mid-height on the sides of the cushion



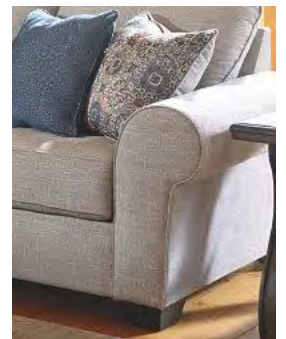
Stress Welting

- Used to prevent seam splitting along the stress point areas of the sofa
- Found on the back of the sofa and on the pillow top arms that are attached to the sofa



Welt

- A narrow tube or strip of fabric used to trim upholstery
- Usually shown on the edges of cushions or arms for a tailored design



ARMS



Rolled Arm

- Curves outward
- More comfortable for lounging or napping
- Usually found on traditional or transitional sets



Track Arm

- Straight arm
- Tailored in appearance
- Usually found on modern and contemporary sets



Charles of London Arm

- **Also called "English arm"**
- Arms are set back from the front of the seat
- Arms are slightly sloped, fabric is tightly fitted
- Often found with folding treatment (pleated) look
- Usually found on traditional sets



Pillow Top Arm

- Typically arms are filled with material to add the level of comfort
- Often have zippers underneath arms to easily add or remove material to adjust firmness of the arms
- Usually found on comfort-based transitional sets



Tuxedo Arm

- **Also known as "Shelter Arms"**
- High arms are the same height as the back
- Sleek, streamlined in style
- Characterized by clean-lined rectangular shape
- Usually found on transitional sets and can be found across all Lifestyles



Flared Arm

- Slants or curves away from the seat
- Clean and simple look
- Usually found on more contemporary or transitional sets



LEGS & FEET



Bun Foot

- Decorative foot shaped like a ball
- **Often flat on bottom side that looks like a "bun"**
- Usually found on traditional and transitional sets



Block Foot

- Square or sometimes triangular shaped vertical foot
- Sleek, simple and modern in style
- Add a clean-lined look to many furniture pieces
- Usually found on modern, contemporary or transitional sets



Bracket Foot

- Resembles a bracket and is sleek and simple in style
- Often made of a metal-like material
- **Sometimes referenced as "console leg"**
- Usually found on modern or contemporary sets



Turned Foot

- Generally, have a carved appearance
- Common on stationary seating
- Found across various style groups



Tapered Leg

- Tapered look narrows as it reaches the floor
- Can be rounded, block, or spindles
- Found across various style groups



Splay Leg

- Flare out to a concave shape
- Can be rounded or squared and is often gradually tapered in
- Usually associated with mid-century modern design



SEATING CUSHIONS



Box Cushion

- Square or rectangular in shape
- Cushion is flush with arms
- Found on many casual and contemporary sets



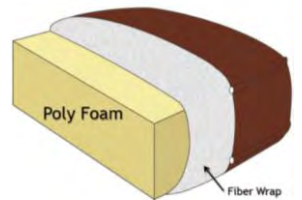
T- Cushion

- **Cushion comes to the front of the arms to form a "T" shape with them**
- These cushions are found on pieces with pushed back arms, so the cushion is visible from the side of the piece
- Often found in many traditional and transitional sets



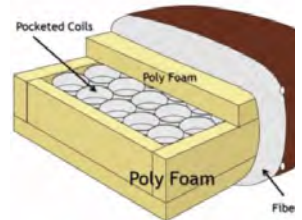
Standard Cushion

- GOOD cushion type
- Wrapped foam cushion
- Standard cushion cores are made from 1.8 density foam
- Blended fiber wrap on both sides to help distribute weight with added comfort layer
- Similarly-priced competition known to use reclaimed fiber



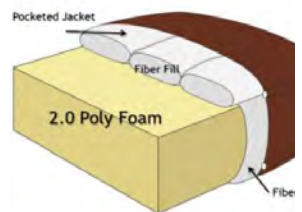
Coil Cushions

- BETTER cushion type
- Individually pocketed coils springs provide uniform shape and consistent support
- Foam-encased for stability and durability
- Fiber wrapped for added layer of comfort



UltraPlush Cushions

- BEST cushion type
- 2.0 high resiliency cushion core
 - Retains support
 - Provides extended durability
 - Better rebound properties
- Individually pocketed cushion jackets with conjugated fiber sewn pockets for even fiber distribution create luxurious plush seating
- UltraPlush Seating offers ultimate comfort and support



Feather Down Cushions

- BEST cushion type
- Reversible cushion constructed with feather & fiber blend insert to enhance the ultimate soft seating
- Lowmelt fiber wrapped for added layer of comfort



INTERNAL CONSTRUCTION



Frame: *Air Dried Hardwood & Plywood*

- Most Ashley frames are proudly made in the USA & have a limited lifetime warranty
- Hardwood can be found on all the critical frame components, known as stress points
- **"Mortise and Tenon" joint construction in high stress areas**



Frame: *Premium MDF Hardboards*

- Most Ashley frames are proudly made in the USA & have a limited lifetime warranty
- MDF is a furniture grade composite wood found in non-stress areas of the frame
- **Often used in home construction due to it's high strength and stable properties**
- MDF is denser than plywood



Sinuous Springs

- Current seating foundation – many sofas moving to Mat Platform Deck
- Seat springs made from 8-gauge galvanized steel
- 4 to 5 springs per seat, with an additional spring near the arms for added stability and comfort
- **Spring clips used in Ashley sofa's springs are Teflon coated to prevent squeaking and are reinforced to the frame with solid wood**



Mat Platform Deck

- New method of seating foundation – alternative to sinuous spring construction
- Heavy duty seat denim, solid wood front and rear rails, 3 webbing strips per seat, steel bar at rear & wrapped and stapled at front rail
- Mat maintains a smooth, tight, wrinkle-free look without dips or sags that can occur over time
- Webbing eliminates spring impressions into the cushion covers
- Flatter surface reduces cushion smiling
- Improves durability of seating support system
- Reduced deterioration of seating support system **throughout furniture's lifespan**



Sleeper

- Available for many sofas and sectionals
 - Most available in Queen and Full size
- Simple to use and extremely convenient
- Most sleepers feature a Memory-Foam mattresses, **some older frames include 4.5" innerspring mattress**; Folded sleeper mechanisms replace seat springs on sleeper sofas and sectionals



STITCHING



Welting

- Welting can also be referred to as piping or cording
- It is a covered cord found between the seams of the furniture
- Provides a more tailored and traditional look
- Often the same fabric as the sofa, but can sometimes be in a different color to add a contrasting look



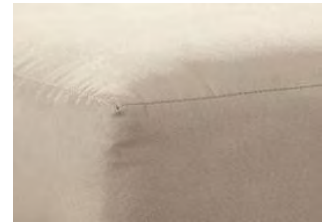
Jumbo Stitching

- Found throughout many sets and often referred to as **"baseball stitching"**
- Provides double reinforcement to avoid seam splitting



No Welting

- Sofa fabric stitched together to provide a clean and seamless look
- Often found on contemporary and modern sofas because of its simplistic look

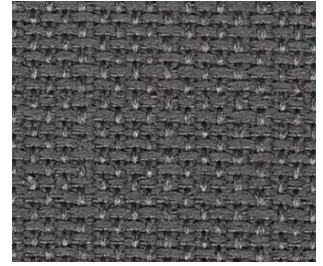


FABRIC



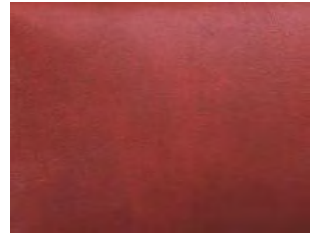
Nuvella

- Solution dyed process when added to the molten polymer and extruded into colored fibers
- Results in 100% penetration of color into the fibers
- Due to the nature of the yarn, Nuvella fabric is known for combating stains and protecting against fading
- Can be cleaned with soap and water while maintaining its original color
- Resistant to dirt, mold & mildew



Polyurethane

- **Commonly referred to as "PU"**
- Made by coating a backing of polyester fabric with flexible polymer and treating it to look more like animal hide
- Realistic imitation of genuine leather in feel and overall appearance



100% Leather

- Consists of Top Grain Leather in high use areas combined with split hides on the outside arms & backs
- **Top Grain Leather refers to the "top portion of the leather hide" that is most supple, durable & cleanable**
- Considered the premium in Leather Upholstered furniture and primarily found in the stationary category
- 100% Leather is often composed of **about 12"** strip of material since it is real animal hide



Leather Match

- Consists of Top Grain Leather in high use areas combined with PVC (Polyvinyl Coating) on the outside arms and backs
- Leather Match has the same Top Grain qualities as 100% Leather, however the PVC is used in place of Split Hides



Polyester Fiber

- High-performance manufactured fiber
- Made from a molten polymer, that is second to cotton in world-wide use
- Excellent strength, high resiliency, easy cleaning & resistance to fading, wrinkling and abrasion
Low absorbency allows fiber to dry quickly



Polyester Fiber Textures



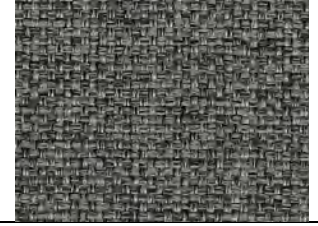
Polyester Fiber: *Chenille*

- Chenille is a type of yarn that is created by twisting yarns of various lengths
- Each yarn has fuzzy surface protruding from all sides, provides some dimension and look of color variation
- Soft to the touch and slightly uneven in appearance
- This makes it very durable and hides dirt or stains well



Polyester Fiber: *Tweed*

- Medium to heavy weight fabric
- Fluffy, woolen, polyester twill weave fabric containing colored slubbed yarns
- Woven look provides dimension and color variation



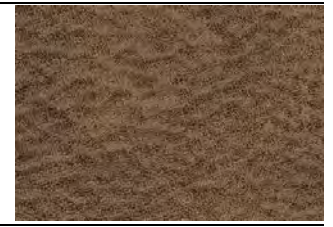
Polyester Fiber: *Microfiber*

- Extremely fine polyester fiber that can be woven into textiles with the texture and drape of natural fiber cloth
- Washable, breathable & water repellent



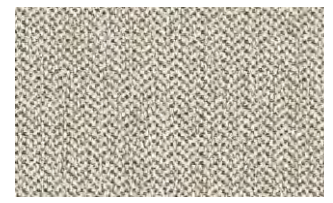
Polyester Fiber: *Leather Look*

- Variety of polyester fabric that displays a distinctive look
- Gives the look of leather and the feel of suede



Polyester Fiber: *Herringbone*

- Woven zig-zag pattern
- Alternating direction in threading the polyester yarn to create chevron design



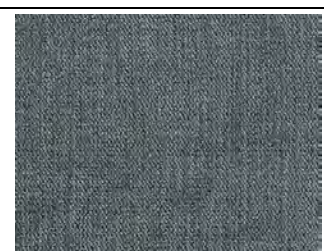
Polyester Fiber: *Linen*

- Linen weave is the simplest type of weave
- Polyester yarns are woven together one after the other
- One of the strongest weaves as the threads are constantly crossing over each other tightly
- Offers a crisp, clean look with often some color variation when looking closely



Polyester Fiber: *Velvet*

- **Known for it's soft to the touch surface**
- **Small threads sticking up out of the fabric create it's soft surface**



Polyester Fiber: *Slub*

- Type of yarn created with slight knots and knobles
- Knobles can be seen as thicker, raised threads on surface & purposely created to provide an uneven textured look



ADDITIONAL DETAILS



Nailheads

- Primarily used to decorate the arms of a sofa, but also may be found throughout the sofa design
- Used for decorative purposes as well as to attach padding or material to furniture
- Sizes and spacing varies based on the set
- Color varies, but often found in a natural bronze finish, shiny pewter or black nickel



Wooden Trim

- Decorative wooden details often found on the arms and base of upholstery pieces
- Most commonly found on more traditional sets
- Ornate detail adds a rich and classy look



Tufting

- When fabric is sewn into the cushioning to create dimples
- Two main types of tufts are Diamond & Waffle
- Diamond – Creates a diamond pattern topped with a button creating a plush surface that looks more formal
- Waffle – When pieces of fabric are sewn in square patches with a dimple where seams intersect; creates a more modern look with adds texture and mid-century modern feel
- Can also be found on upholstered chairs and bedframes



Reclining Mechanisms

- Reclining footrest mechanisms are available in both manual and power
- Manual options include a lever which requires user to pull lever and push back to recline
- Power option reclines with the **press of a lever**, user has more control over reclining position



Swivel Chairs

- Many **Stationary** sets include a **swivel chair**
- **Designed to offer comfort & style** . These are great in rooms where there are multiple focal point like a view, a fireplace, a TV or in a conversation grouping.



FABRIC CARE & CLEANING

'W' Fabric

Spot clean only with warm water-based shampoo or foam upholstery cleaner



75007 Darcy



39602 Tensas



31901 Larkinhurst



32202 Kumasi

'S' Fabric

Spot clean with water free dry cleaning solvent



72706 Termoli



77205 Dorsten



41501 Hallenberg



15104 Harleson

'WS' & 'SW' Fabric

Clean with upholstery shampoo foam from a mild detergent, or mild dry clean solvent



31102 Savesto



99004 Dandrea



73701 Fermoy

