

# Sofa Training Guide

## SOFA BACK TYPES



### Loose Back

- Cushions are separate from the sofa back allowing for a softer, comfortable back
- More a casual style that allows you to turn and rotate back cushions which extends the longevity of the upholstery to last twice as long



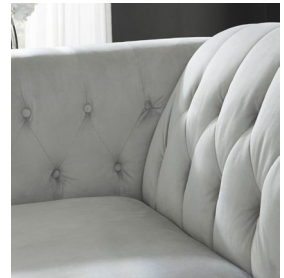
### Tight Back

- Back cushion is completely integrated into the sofa back
- Provides a firmer feel and structured look
- Always looks neat because back is in place
- No plumping or fluffing of the back cushions needed



### Tufted Back

- Tufting is the process of drawing a cord through a deep cushion giving high puffs of padding and small low valleys where the cord is drawn
- Other names describing the shape of the tuft are "diamond", "biscuit" or "square"
- Buttons are attached to cords to highlight the tufting design



### Semi Attach Back

- Looks like a loose back but cushions are sewn into place
- Back cushions typically have zippers underneath for fluffing and regulating the preferred amount of fiber fill needed



### Reverse Camel Back

- Displays an inverted "hump" in the center of the back
- Elegant and traditional in style & can be found across a variety of furniture styles



### Scatter Back

- Multiple pillows are arranged across the back of the sofa in the place of larger cushions
- Offer an easily adjustable comfort



## SOFA BACK CUSHIONS



### **Boxed Back Cushion**

- Constructed with a vertical sidewall that is the same height as the thickness of the cushions
- These cushions are made by assembling the top and bottom section of the cut fabric to the sidewall fabric to form a box



### **Knife Edge Cushion**

- Made by sewing the top and bottom fabric panels together
- More traditional seam which mid-height on the sides of the cushion



# ARMS



## Rolled Arm

- Curves outward
- More comfortable for lounging or napping
- Usually found on traditional or transitional sets



## Track Arm

- Straight arm
- Tailored in appearance
- Usually found on modern and contemporary sets



## Charles of London Arm

- Also called "English arm"
- Arms are set back from the front of the seat
- Arms are slightly sloped, fabric is tightly fitted
- Often found with folding treatment (pleated) look
- Usually found on traditional sets



## Pillow Top Arm

- Typically arms are filled with material to add the level of comfort
- Often have zippers underneath arms to easily add or remove material to adjust firmness of the arms
- Usually found on comfort-based transitional sets



## Shelter Arm

- High arms are the same or close to height as the back
- Sleek, streamlined in style
- Characterized by clean-lined rectangular shape
- Usually found on transitional sets and can be found across all Lifestyles



## Flared Arm

- Slants or curves away from the seat
- Clean and simple look
- Usually found on more contemporary or transitional sets





## LEGS & FEET



### Bun Foot

- Decorative foot shaped like a ball
- Often flat on bottom side that looks like a "bun"
- Usually found on traditional and transitional sets



### Block Foot

- Square or sometimes triangular shaped vertical foot
- Sleek, simple and modern in style
- Add a clean-lined look to many furniture pieces
- Usually found on modern, contemporary or transitional sets



### Bracket Foot

- Resembles a bracket and is sleek and simple in style
- Often made of a metal-like material
- Sometimes referenced as "console leg"
- Usually found on modern or contemporary sets



### Turned Foot

- Generally, have a carved appearance
- Common on stationary seating
- Found across various style groups



### Tapered Leg

- Tapered look narrows as it reaches the floor
- Can be rounded, block, or spindles
- Found across various style groups



### Splay Leg

- Flare out to a concave shape
- Can be rounded or squared and is often gradually tapered in
- Usually associated with mid-century modern design



# SEATING CUSHIONS



## Box Cushion

- Square or rectangular in shape
- Cushion is flush with arms
- Found on many casual and contemporary sets



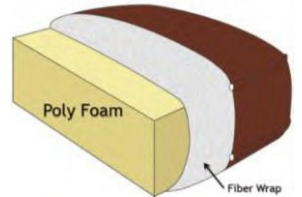
## T- Cushion

- Cushion comes to the front of the arms to form a "T" shape with them
- These cushions are found on pieces with pushed back arms, so the cushion is visible from the side of the piece
- Often found in many traditional and transitional sets



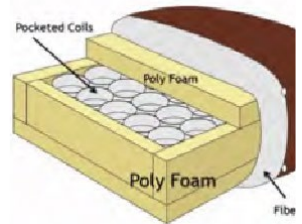
## High Density Cushion

- Wrapped foam cushion
- Our cushion cores are made from 1.8 density foam
- Blended fiber wrap on both sides to help distribute weight with added comfort layer
- Similarly-priced competition known to use reclaimed fiber



## Coil Cushions

- Individually pocketed coils springs provide uniform shape and consistent support
- Foam-encased for stability and durability
- Fiber wrapped for added layer of comfort
- **Only available on the 487, 319 and 800 Collections**



## Plush Cushions

- 6" cushion available on deep-seated collections with 40" seat depth
- 7" cushion available on deep-seated collections with 44"+ seat depth
- Thick 2-inch blended fiber pad wrap on both sides to help distribute weight with added plush comfort



## Feather Down Cushions

- Seat cushion with feather fiber blend encasing a foam core
- Available as reversible
- Ultimate cloud like comfort story

# INTERNAL CONSTRUCTION



## **Frame:** *Air Dried Hardwood & Plywood*

- Most Ashley frames are proudly made in the USA & have a limited lifetime warranty
- Hardwood can be found on all the critical frame components, known as stress points
- "Mortise and Tenon" joint construction in high stress areas



## **Frame:** *Premium OSB*

- Manufactured by compressing multi-directional pieces of wood with adhesives under high heat and pressure
- Often used in home construction due to its high strength and consistent density, has twice the shear strength of plywood
- Resists deflection, delamination and warping



## **Mat Platform Deck**

- New method of seating foundation – alternative to sinuous spring construction
- Heavy duty seat denim, solid wood front and rear rails, 3 webbing strips per seat, steel bar at rear & wrapped and stapled at front rail
- Mat maintains a smooth, tight, wrinkle-free look without dips or sags that can occur over time
- Webbing eliminates spring impressions into the cushion covers
- Flatter surface reduces cushion smiling
- Improves durability of seating support system
- Reduced deterioration of seating support system throughout furniture's lifespan



## **Sleeper**

- Available for many sofas and sectionals
- Most available in Queen and Full size
- Simple to use and extremely convenient
- Most sleepers feature a Memory-Foam mattresses, some older frames include 4.5" innerspring mattress; Folded sleeper mechanisms replace seat springs on sleeper sofas and sectionals





# STITCHING & WELTING



## Welting

- Welting can also be referred to as piping or cording
- It is a covered cord found between the seams of the furniture
- Provides a more tailored and traditional look
- Often the same fabric as the sofa, but can sometimes be in a different color to add a contrasting look



## Contrast Welt

- A welt cord that is done out of a different fabric is called a contrasting welt cord. Contrasting welt cords add lots of style & pop to your upholstery.



## Stress Welting

- Used to prevent seam splitting along the stress point areas of the sofa
- Found on the back of the sofa and on the pillow top arms that are attached to the sofa



## No Welting

- Sofa fabric stitched together to provide a clean and seamless look
- Often found on contemporary and modern sofas because of its simplistic look



## Jumbo Stitching

- Found throughout many sets and often referred to as "baseball stitching"
- Provides double reinforcement to avoid seam splitting



# FABRIC



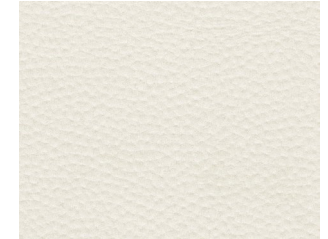
## Nuvella

- Solution dyed process when added to the molten polymer and extruded into colored fibers
- Results in 100% penetration of color into the fibers
- Due to the nature of the yarn, Nuvella fabric is known for combating stains and protecting against fading
- Can be cleaned with soap and water while maintaining its original color
- Resistant to dirt, mold & mildew



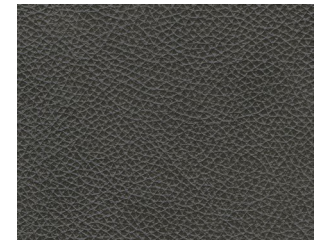
## Next-Gen Gaucho

- 55% polyester, 45% PU
- Fabric has an embossed grain effect
- Soft Nubuck suede like hand feel
- Water repellent treatment added to the top fabric coat



## Leather Match

- Consists of Top Grain Leather in high use areas combined with PVC (Polyvinyl Coating) on the outside arms and backs
- Leather Match has the same Top Grain qualities as 100% Leather in seating and touch areas, however the PVC is used in place of Split Hides on backs and sides.



## Polyester Fiber

- High-performance manufactured fiber
- Made from a molten polymer, that is second to cotton in world-wide use
- Excellent strength, high resiliency, easy cleaning & resistance to fading, wrinkling and abrasion, low absorbency allows fiber to dry quickly



## Polyester Fiber: *Chenille*

- Chenille is a type of yarn that is created by twisting yarns of various lengths
- Each yarn has fuzzy surface protruding from all sides, provides some dimension and look of color variation
- Soft to the touch and slightly uneven in appearance
- This makes it very durable and hides dirt or stains well



## Polyester Fiber: *Tweed*

- Medium to heavy weight fabric
- Fluffy, woolen, polyester twill weave fabric containing colored slubbed yarns
- Woven look provides dimension and color variation





## Polyester Fiber Textures



### **Polyester Fiber: *Microfiber***

- Extremely fine polyester fiber that can be woven into textiles with the texture and drape of natural fiber cloth
- Washable, breathable & water repellent



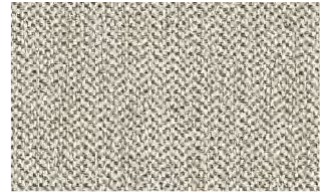
### **Polyester Fiber: *Leather Look***

- Variety of polyester fabric that displays a distinctive look
- Gives the look of leather and the feel of suede



### **Polyester Fiber: *Herringbone***

- Woven zig-zag pattern
- Alternating direction in threading the polyester yarn to create chevron design



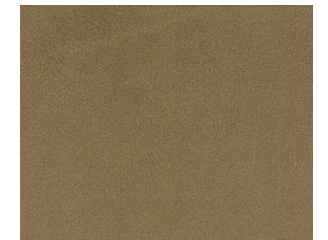
### **Polyester Fiber: *Linen***

- Linen weave is the simplest type of weave
- Polyester yarns are woven together one after the other
- One of the strongest weaves as the threads are constantly crossing over each other tightly
- Offers a crisp, clean look with often some color variation when looking closely



### **Polyester Fiber: *Velvet***

- A cut pile cloth. Common in formal settings but have evolved to more casual or transitional designs. Velvets have a great hand & wear beautifully, but they will crush! Crushing of velvet is not a defect, it is a normal function and will continue over time. They can be made of natural or synthetic fibers.



### **Polyester Fiber: *Slub***

- Type of yarn created with slight knots and knobbles
- Knobbles can be seen as thicker, raised threads on surface & purposely created to provide an uneven textured look



## ADDITIONAL DETAILS



### Nailheads

- Primarily used to decorate the arms of a sofa, but also may be found throughout the sofa design
- Used for decorative purposes as well as to attach padding or material to furniture
- Sizes and spacing varies based on the set
- Color varies, but often found in a natural bronze finish, shiny pewter or black nickel



### Wooden Trim

- Decorative wooden details often found on the arms and base of upholstery pieces made in a PVC mold
- Most commonly found on more traditional sets
- Ornate detail adds a rich and classy look



### Tufting

- When fabric is sewn into the cushioning to create dimples
- Two main types of tufts are Diamond & Waffle
- **Diamond** – Creates a diamond pattern topped with a button creating a plush surface that looks more formal
- **Waffle** – When pieces of fabric are sewn in square patches with a dimple where seams intersect; creates a more modern look with adds texture and mid-century modern feel
- Can also be found on upholstered chairs and bedframes



### Reclining Mechanisms

- Reclining footrest mechanisms are available in both manual and power
- Manual options include a lever which requires user to pull lever and push back to recline
- Power option reclines with the press of a lever, user has more control over reclining position



### Swivel Chairs

- Many Stationary sets include a swivel chair
- Designed to offer comfort & style . These are great in rooms where there are multiple focal point like a view, a fireplace, a TV or in a conversation grouping.



# FABRIC CARE & CLEANING

## **'W' Fabric**

Spot clean only with warm water-based shampoo or foam upholstery cleaner



159604 Rawcliff

## **'S' Fabric**

Spot clean with water free dry cleaning solvent



15005 Lainee

## **'WS' & 'SW' Fabric**

Clean with upholstery shampoo foam from a mild detergent, or mild dry clean solvent



13201 Asanti